
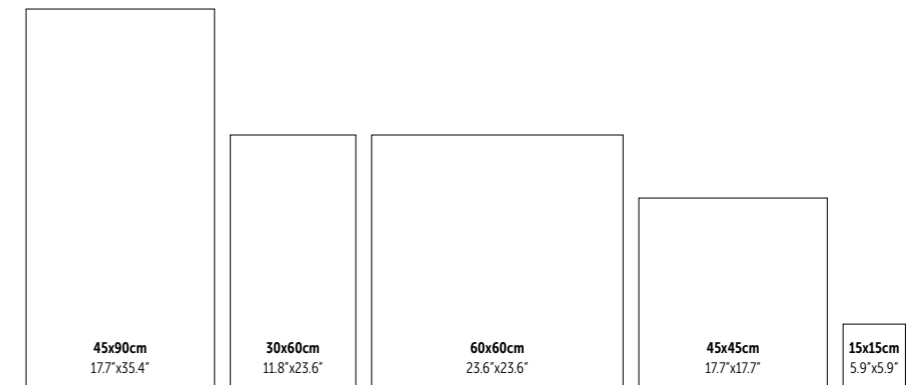


# BACKSTAGE

The allure of aged microcement in elegant and sophisticated atmospheres.

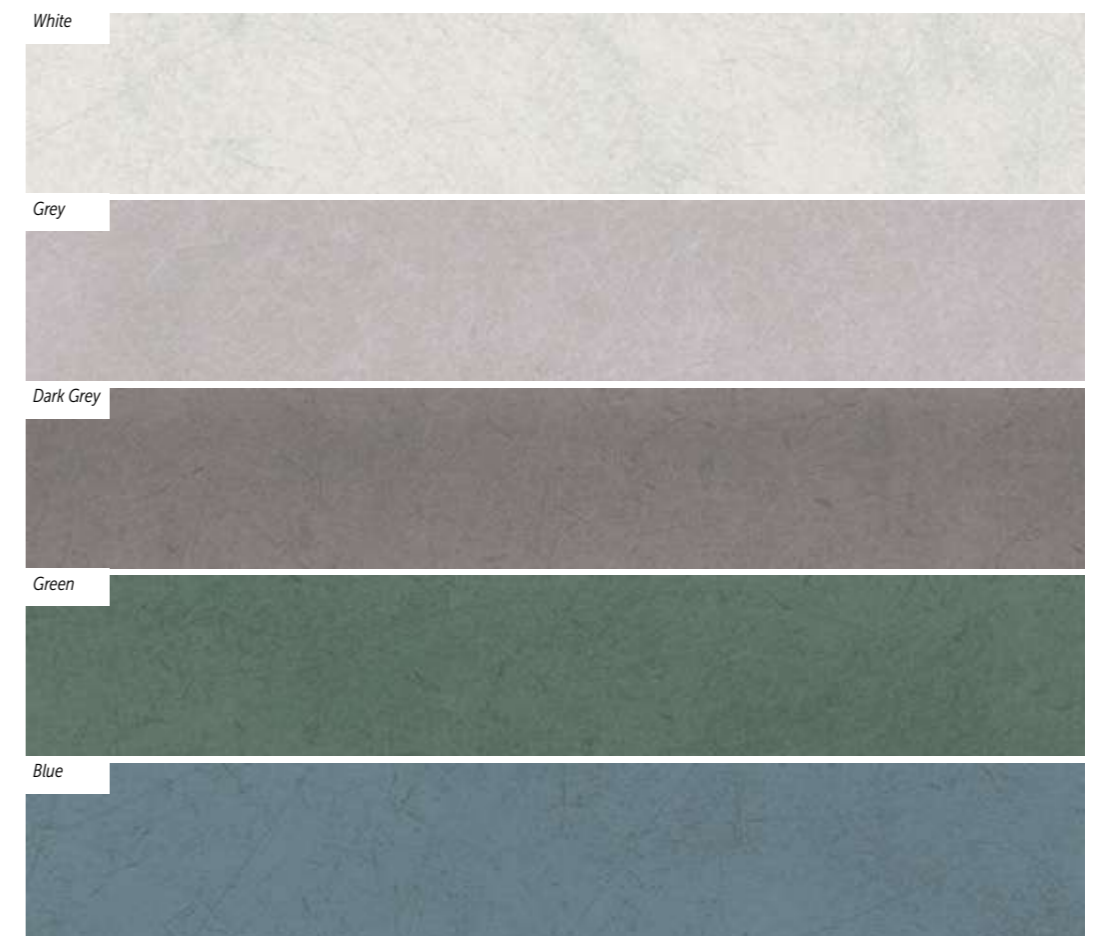
O fascínio do microcimento envelhecido em ambientes elegantes e sofisticados.  
L'attrait du microciment vieilli dans des ambiances élégantes et sophistiquées.  
Der Reiz von gealtertem Mikrozeement in eleganter und raffinierter Atmosphäre.  
El encanto del microcemento envejecido en ambientes elegantes y sofisticados.

 **Porcelain Tiles**  
Wall & Floor



## COLOURS

Cores . Couleurs . Farben . Colores



*Wall:*  
Mosaic Hexa Slim Backstage Blue 28.1x34.1 cm Natural DC1025  
Backstage Grey 29.5x59.2 cm ret. Natural P3102R

*Floor:*  
Backstage Dark Grey 59.2x59.2 cm ret. Natural P6122R



SEE IT IN YOUR ROOM!

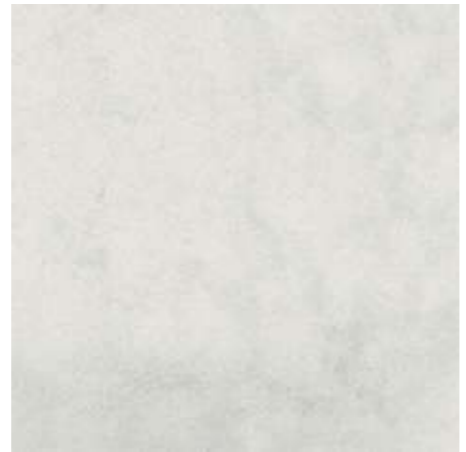
# BACKSTAGE





**WHITE**  
44.3x88.8 cm ret.  
29.5x59.2 cm ret.  
30x60 cm

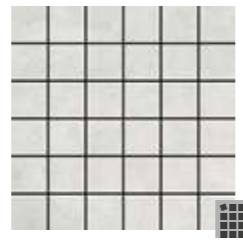
P9140R | GD15  
P3101R | GD07  
P3101 | GC08



**WHITE**  
59.2x59.2 cm ret.  
60x60 cm  
45x45 cm

P6120R | GD09 P6125R | GD11  
P6120 | GC12 P6125 | GC14  
PE031 | GC04

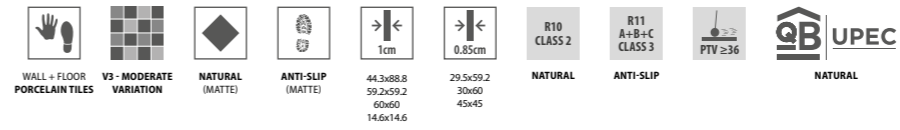
**WHITE**  
14.6x14.6 cm ret. P6120RCS | GD21



**MOSAIC BACKSTAGE WHITE**  
(4.7X4.7 CM) (PIECE)  
29.5x29.5x0.85 cm DC4031 | GJ33

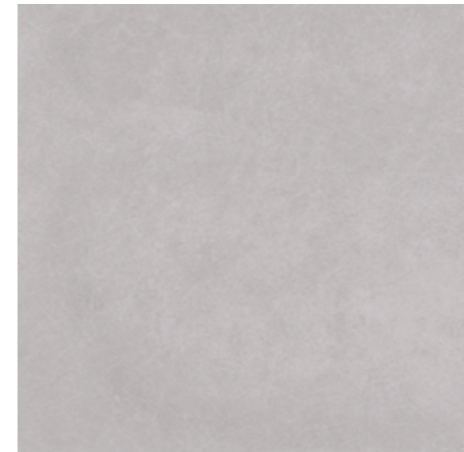


**MOSAIC HEXA SLIM BACKSTAGE**  
**WHITE** (PIECE)  
28.1x34.1x0.85 cm DC1021 | GJ39



**GREY**  
44.3x88.8 cm ret.  
29.5x59.2 cm ret.  
30x60 cm

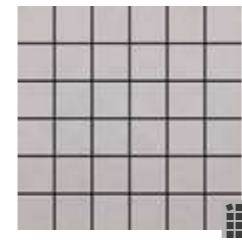
P9141R | GD15  
P3102R | GD07  
P3102 | GC08



**GREY**  
59.2x59.2 cm ret.  
60x60 cm  
45x45 cm

P6121R | GD09 P6126R | GD11  
P6121 | GC12 P6126 | GC14  
PE032 | GC04

**GREY**  
14.6x14.6 cm ret. P6121RCS | GD21



**MOSAIC BACKSTAGE GREY**  
(4.7X4.7 CM) (PIECE)  
29.5x29.5x0.85 cm DC4032 | GJ33

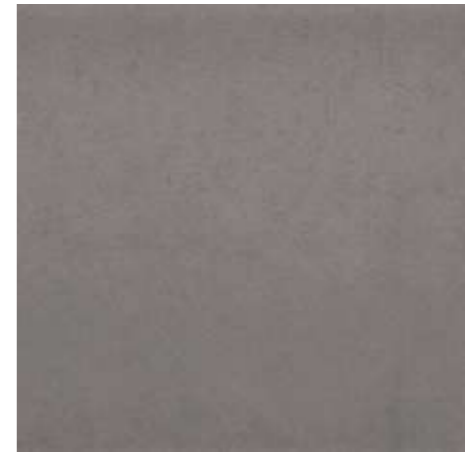


**MOSAIC HEXA SLIM BACKSTAGE**  
**GREY** (PIECE)  
28.1x34.1x0.85 cm DC1022 | GJ39



**DARK GREY**  
44.3x88.8 cm ret.  
29.5x59.2 cm ret.  
30x60 cm

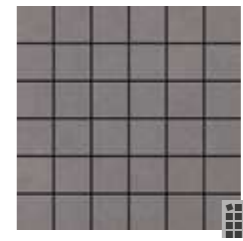
P9142R | GD15  
P3103R | GD07  
P3103 | GC08



**DARK GREY**  
59.2x59.2 cm ret.  
60x60 cm  
45x45 cm

P6122R | GD09 P6127R | GD11  
P6122 | GC12 P6127 | GC14  
PE033 | GC04

**DARK GREY**  
14.6x14.6 cm ret. P6122RCS | GD21



**MOSAIC BACKSTAGE DARK GREY**  
(4.7X4.7 CM) (PIECE)  
29.5x29.5x0.85 cm DC4033 | GJ33



**MOSAIC HEXA SLIM BACKSTAGE**  
**DARK GREY** (PIECE)  
28.1x34.1x0.85 cm DC1023 | GJ39

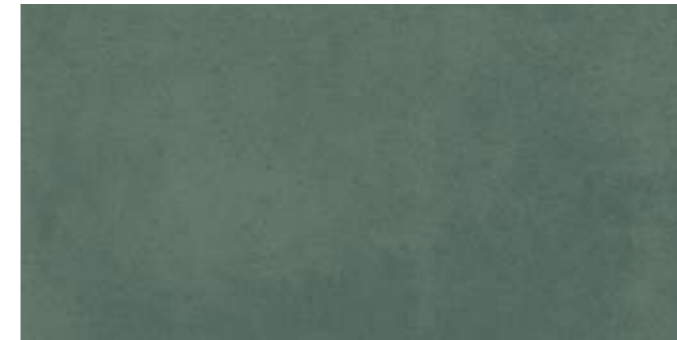


Wall:  
Backstage Green 29.5x59.2 cm Natural P3104R  
Backstage Dark Grey 29.5x59.2 cm ret. Natural P3103R

Floor:  
Backstage Dark Grey 59.2x59.2 cm ret. Natural P6122R



# BACKSTAGE



**GREEN**  
44.3x88.8 cm ret.  
29.5x59.2 cm ret.  
30x60 cm

P9143R | GD15  
P3104R | GD07  
P3104 | GC08



**BLUE**  
44.3x88.8 cm ret.  
29.5x59.2 cm ret.  
30x60 cm

P9144R | GD15  
P3105R | GD07  
P3105 | GC08



**GREEN**  
59.2x59.2 cm ret.  
60x60 cm

P6123R | GD09  
P6123 | GC12



**GREEN**  
14.6x14.6 cm ret.

P6123RC5 | GD21  
P6124 | GC12



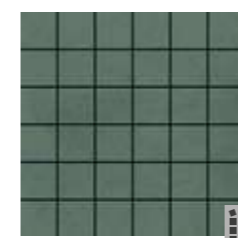
**BLUE**  
59.2x59.2 cm ret.  
60x60 cm

P6124R | GD09  
P6124 | GC12

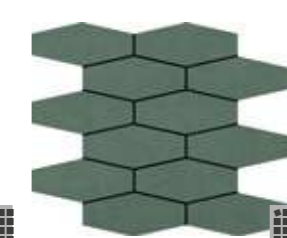


**BLUE**  
14.6x14.6 cm ret.

P6124RC5 | GD21  
P6125 | GC12



**MOSAIC BACKSTAGE GREEN**  
(4.7X4.7 CM) (PIECE)  
29.5x29.5x0.85 cm DC4034 | GJ33



**MOSAIC HEXA SLIM BACKSTAGE GREEN** (PIECE)  
28.1x34.1x0.85 cm DC1024 | GJ39



**MOSAIC BACKSTAGE BLUE**  
(4.7X4.7 CM) (PIECE)  
29.5x29.5x0.85 cm DC4035 | GJ33



**MOSAIC HEXA SLIM BACKSTAGE BLUE** (PIECE)  
28.1x34.1x0.85 cm DC1025 | GJ39

### SPECIAL PIECES

Stairstep Degrau . Nez-de-Marche Stufe . Peldaño	Step Extra Fluted* Degrau Espessurado. Nez de Marche Forte Epaisseur Winkelstufe . Peldaño con Espesor	Skirting Rodapé . Plinthe Sockel . Rodapié
44.3x88.8x1 cm ret.   GJ46	29.5x88.8x1 cm ret.   GJ59	8x44.3x1 cm ret.   GJ09
59.2x59.2x1 cm ret.   GJ42	29.5x59.2x0.85 cm ret.   GJ58	8x59.2x1 cm ret.   GJ14
29.5x59.2x1 cm ret.   GJ33		8x60x1 cm   GJ10
29.5x59.2x0.85 cm ret.   GJ30		8x45x0.85 cm   GJ07
60x60x1 cm   GJ36		
45x45x0.85 cm   GJ28		
30x60x1 cm   GJ28		
30x60x0.85 cm   GJ24		

### PACKAGING

Sizes (cm) Dimensão . Format Maße . Formato	Pieces Peças . Pièces Stück . Piezas	SQM M <sup>2</sup>	Weight Peso . Poids Gewicht . Peso	Box Caixa . Boîte Karton . Caja	SQM M <sup>2</sup>	Weight Peso . Poids Gewicht . Peso
44.3x88.8x1 ret.	2	0.787	17.72	43	33.841	782
59.2x59.2x1 ret.	3	1.050	23.20	36	37.800	855
29.5x59.2x0.85 ret.	7	1.220	22.60	40	48.800	924
14.6x14.6x1 ret.	38	0.810	16.84	52	42.120	925
60x60x1	3	1.080	23.78	36	38.880	876
45x45x0.85	5	1.010	19.20	36	36.360	711
30x60x0.85	7	1.260	23.40	40	50.400	956

\* Minimum of 10 pieces . Quantidade mínima de 10 peças . Quantité minimum de 10 pièces . Mindestmenge: 10 Stücke . Cantidad mínima de 10 piezas